

Фотографије одабраних родова планктонских алги чији се представници налазе у реци Дунав, према листи врста објављеној у ISPDR Joint Danube Survey (2002)

CYANOPHYTA

Chroococcales
Microcystis sp.

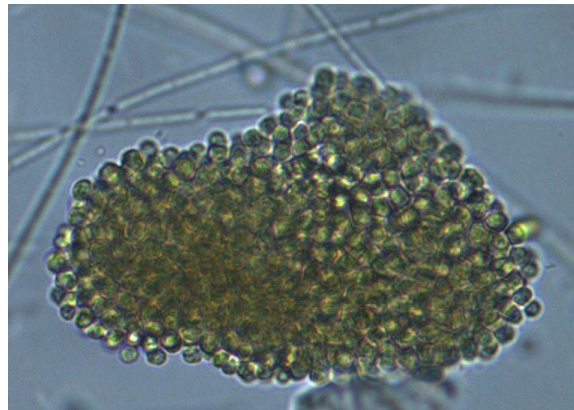


Foto: Jurca & Mijić

Oscillatoriales
Oscillatoria sp.

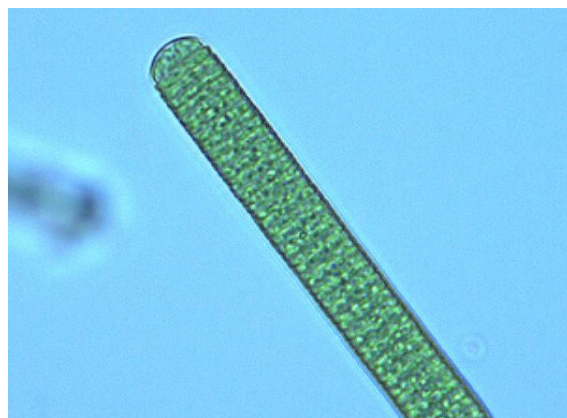


Foto: Jurca & Mijić

EUGLENOPHYTA

Euglena sp.

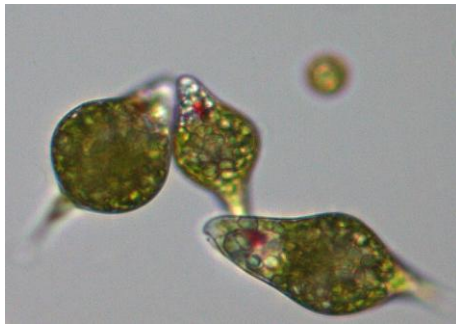
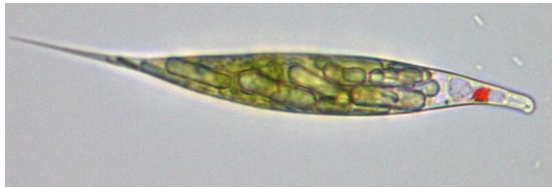


Foto: Jurca & Mijić

Phacus sp.

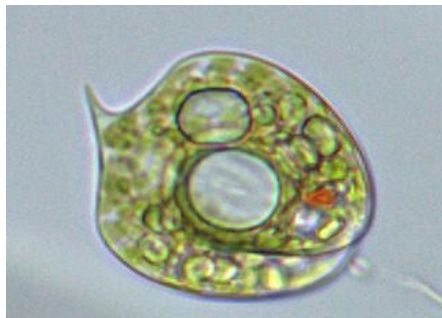
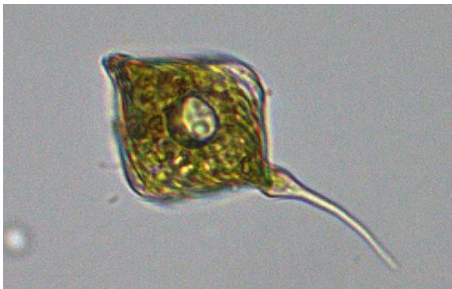


Foto: Jurca & Mijić

Trachelomonas sp.

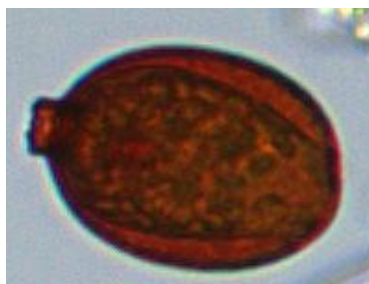
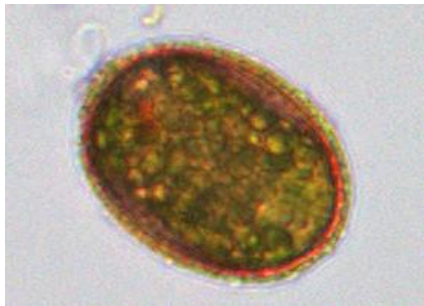


Foto: Jurca & Mijić

DINOPHYTA

Ceratium sp.

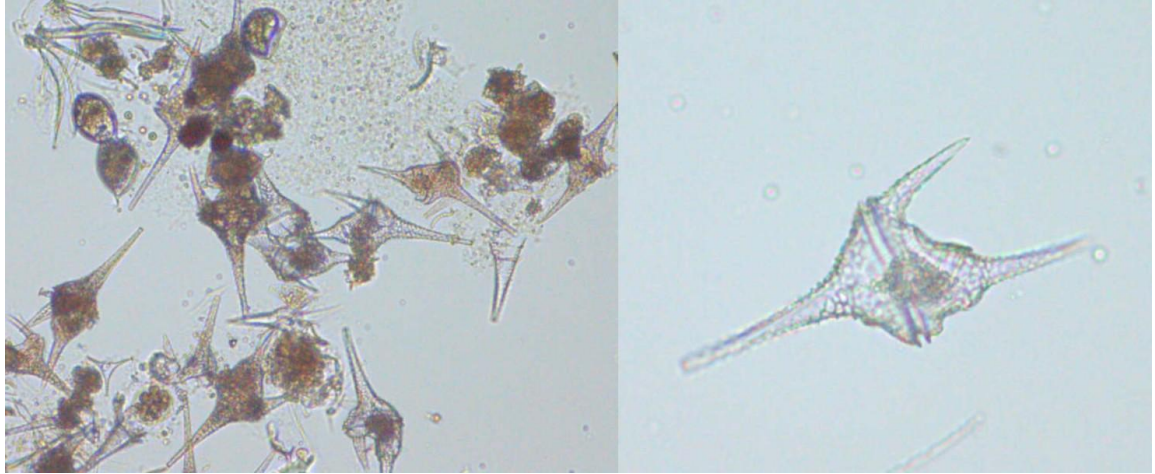


Foto: Jurca & Mijić

DIATOMOPHYCEAE

Centrales

Melosira sp.

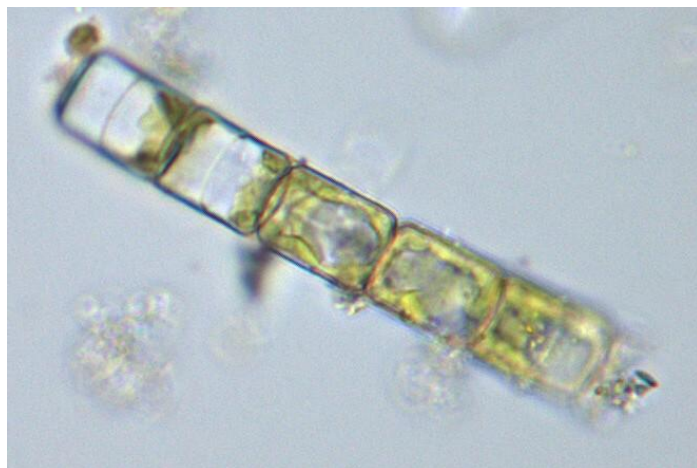


Foto: Jurca & Mijić

Pennales
Asterionella sp.

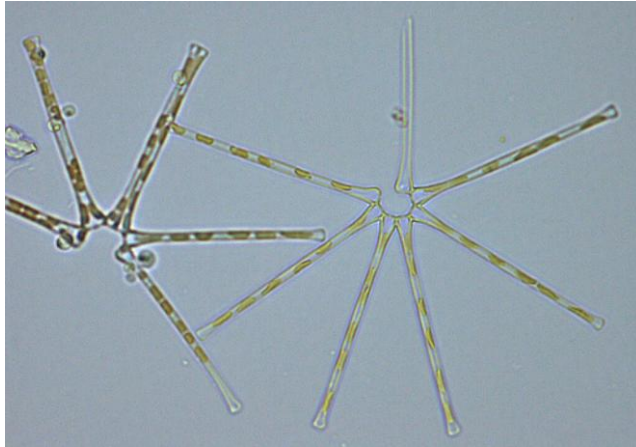


Foto: Jurca & Mijić

Cymatopleura sp.



Foto: Jurca & Mijić

CHLOROCOCCALES

Pediastrum sp.

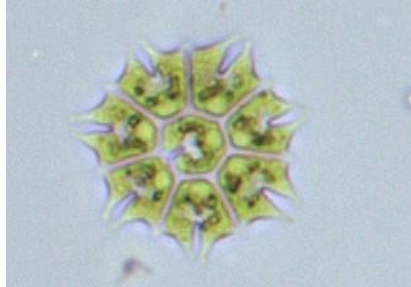


Foto: Jurca & Mijić

Scenedesmus sp.



Foto: Jurca & Mijić